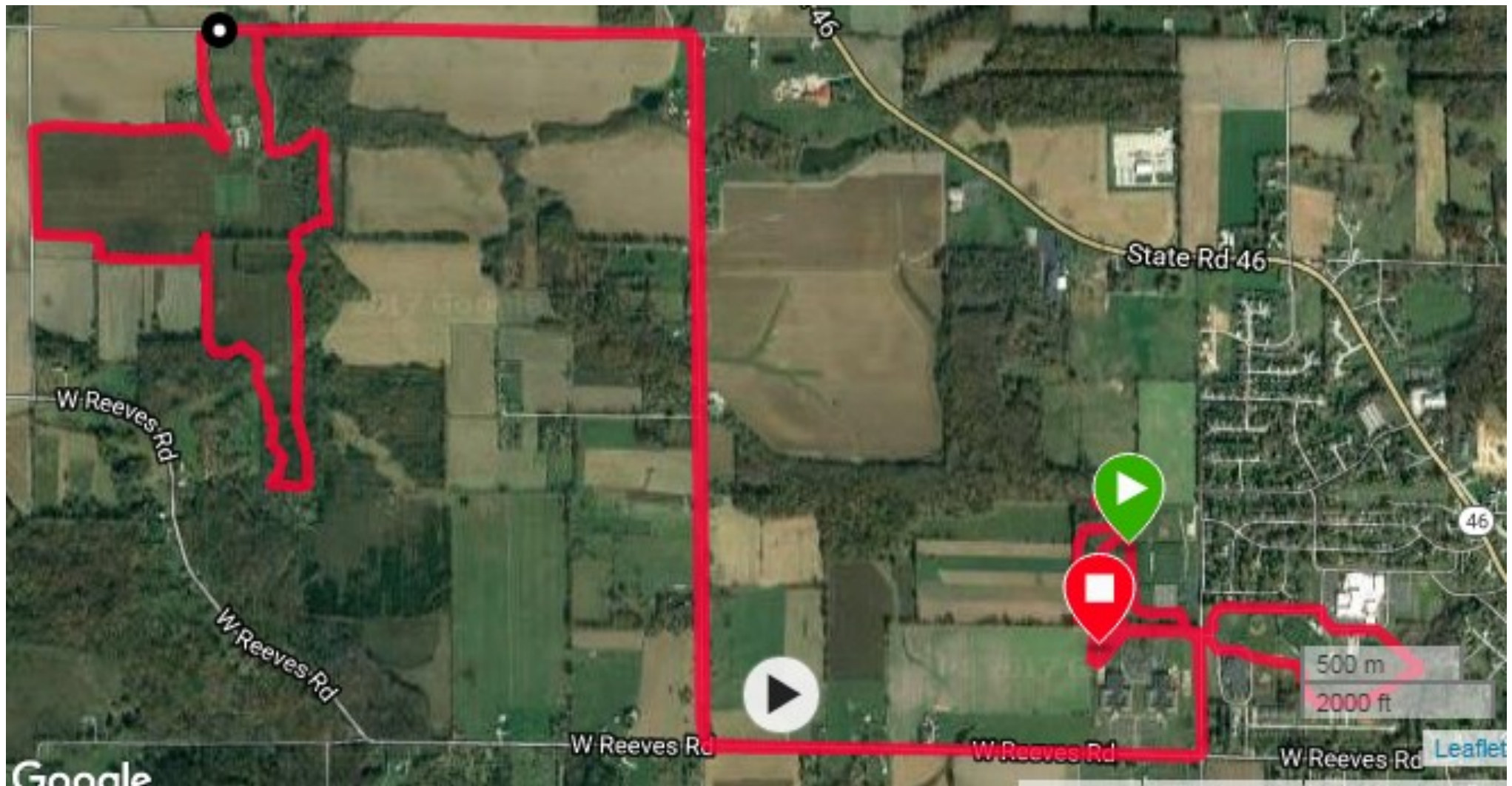
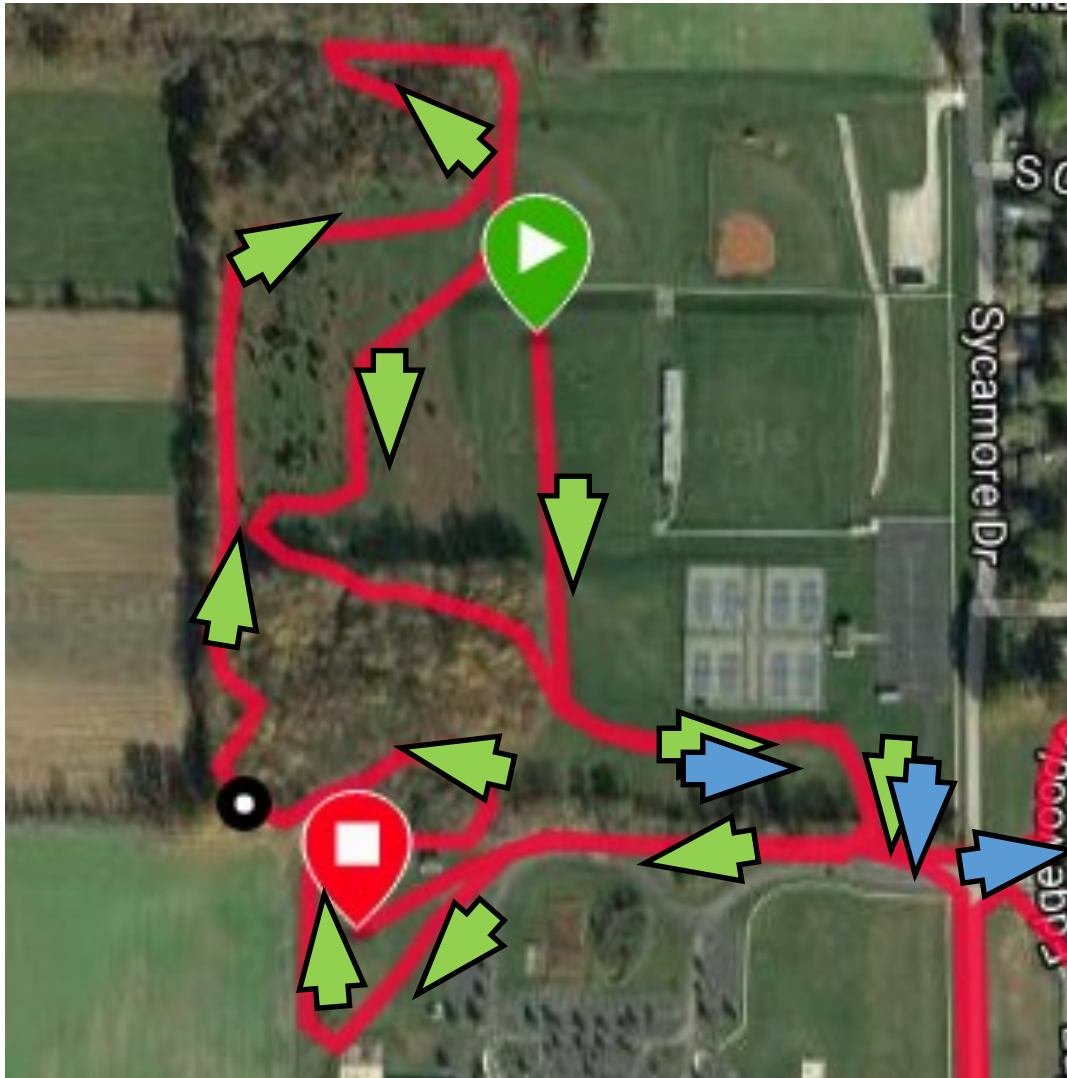


2017 Mustang Mini Full Course Overview





2017 Mustang Mini (Segment 1)

"XC Course Start"

- Start at Green Dot and follow Green Arrows for One Full XC Loop*
- Pick up Blue Arrows on 2nd loop and head across street towards EHS Track and next woods section.*
- The course is VERY well marked*

2017 Mustang Mini (Segment 2)

"Superintendent Woods"

- *Coming off of XC Loop, follow blue arrows past track and into next woods section.*
- *Come out of woods in front of EJHS, then turn Left on Sycamore and start heading out towards flatwoods.*
- *Watch for white painted arrows on ground at turns, and Teflon tape across intersections*



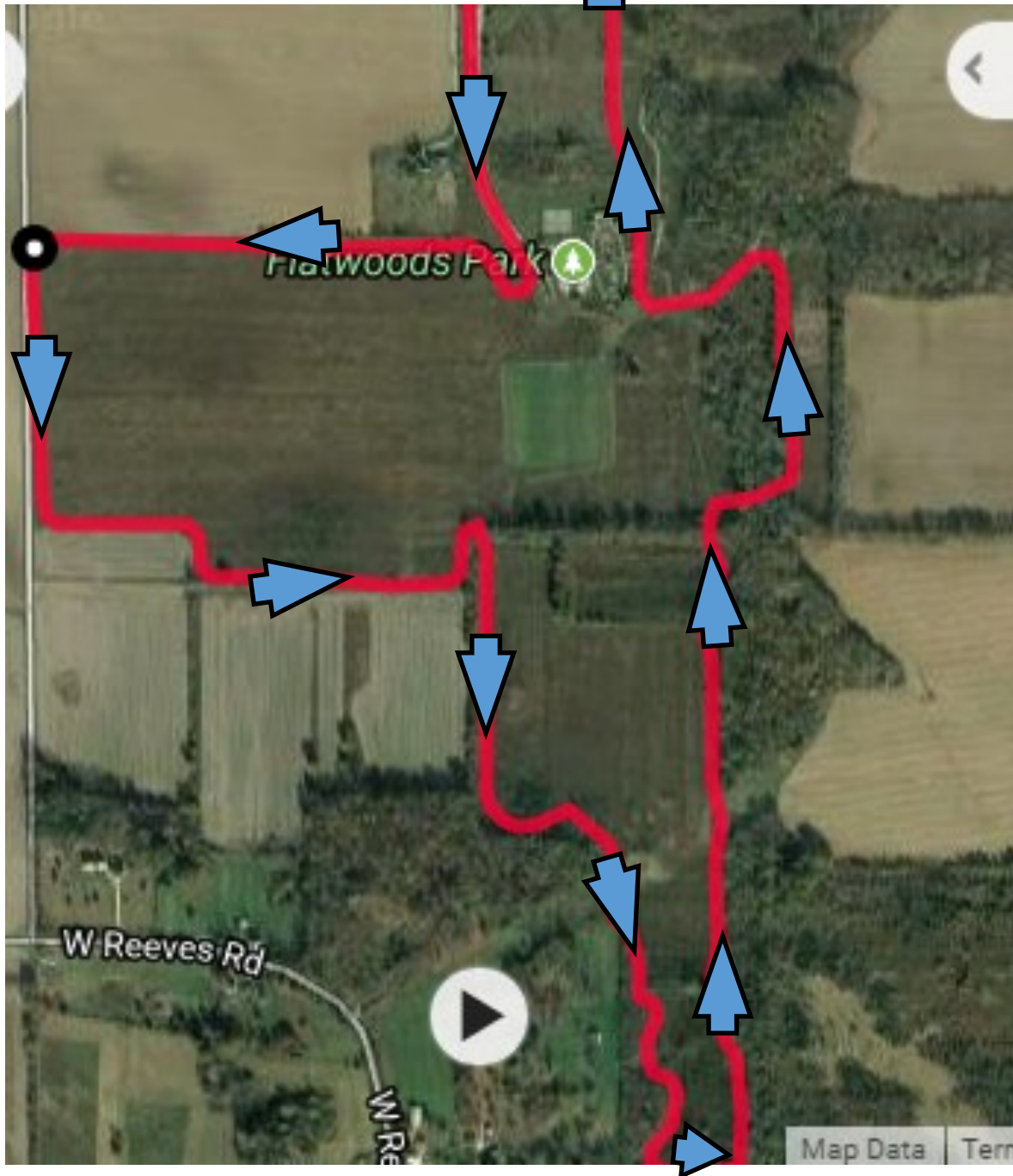
2017 Mustang Mini (Segment 3)

“EJHS to Flatwoods”

- This stretch is along the straight, county roads to get to Flatwoods Park*
- Left on Sycamore, Right on Reeves, Right on Starnes, Left on Flatwoods to Park entrance*
- Watch for white standing signs with directional arrows.*

In Flatwoods Park, From Flatwoods Road (6.5mi)

Out Flatwoods Park, To start heading back (9.5mi)



2017 Mustang Mini (Segment 4)

"Flatwoods trails"

- Turn left into Flatwoods Park main entrance.*
- Turn right into trail portion (about 3 miles worth)*
- Watch for white painted arrows on ground at turns, and Teflon tape across intersections*

2017 Mustang Mini (Segment 5)

“Flatwoods to EPS/EIS”

- This stretch is along the straight, county roads to get to back into town the way you came out.*
- Right out of park onto Flatwoods Road, Right on Starnes, Left on Reeves*
- Watch for white standing signs with directional arrows.*

2017 Mustang Mini (Segment 6)

"The Finishing Kick"

- At 12.75, turn left into EPS/EIS parking lot
- Follow cones to cut between the two schools.
- Veer right in back parking lot towards XC Course
- Pick up Course just to the right of the grove of trees, turning left.
- Head towards finish chute!!

